

Professional
Volume
Price
List
2011



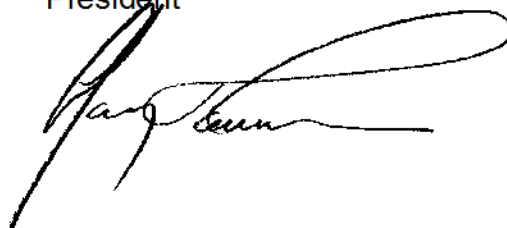
Professional Digital Imaging

Dear Friends,

With more than 25 years of experience in the professional photofinishing industry, Protek has established itself as an industry leader with a proven track record of success. Protek is the premium choice to optimize all your Professional Photofinishing and Flush Mount Album binding needs. We excel at providing superior solutions and offer an unparalleled combination of price, value, and service

After fifteen years of continuous growth, we have now initiated complete and comprehensive album printing and binding services, please visit [Juliana Albums](#) for all details. Our mission is to secure the ongoing confidence of our clients with the most up to date technology and services available. If you are not yet a part of our family of clients, I welcome your questions or concerns and I will personally see that all of your needs will be fulfilled.

Henry Taroian
President

A handwritten signature in black ink, appearing to read "Henry Taroian", with a large, sweeping flourish extending to the right.

General Information

Business Hours

Customer service hours are 9:00 A.M. to 5:00 P.M. Monday through Friday.
For any questions, please contact us during customer service hours.

Terms

Open account: Upon approval of a current credit application and establishing a credit limit, we will deliver orders on an open account basis. Monthly statements will be sent to open accounts at the end of each month, and due in full by the 10th of each month.

Accounts past due 20 days are subject to a 1½% finance charge, equal to 18% annually and an automatic suspension of open account privileges. **Protek Color Lab** reserves the right not to deliver current orders on overdue or past due accounts. All returned checks will be subject to a fee of \$50.00 or 5% of the check amount whichever is greater. All prices are subject to change without any notice.

PREPAID: Using this method of handling, the customer calculates most of the order, plus shipping and handling and includes a check or money order for that amount.

C.O.D.: Payment in full for orders delivered. For your convenience we accept all major credit cards.

Delivery & Delivery Times

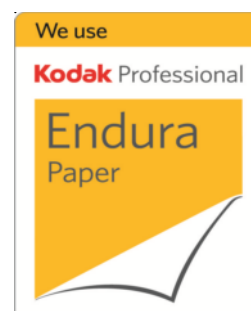
We offer free pickup and delivery for our established accounts. We also ship via U.P.S. or AIRBORNE EXPRESS. Customers will pay carriers C.O.D. charges. Shipping and handling charges may apply. Delivery times are estimates only. **Protek Color Lab** makes no promises and assumes no responsibility for any delay, though every effort will be made to deliver within the estimated times.

Rush Service

We offer rush delivery upon request. A 100% surcharge will apply to all rush orders. All orders marked **RUSH** by the studio will be treated as **RUSH** and will be billed as **RUSH**. Please call customer service prior to submitting any **RUSH** orders.

Studio Samples

It is the sole discretion of **Protek Color Lab** to apply discounts or concessions to orders that are marked **STUDIO SAMPLES**. Only studios with an established account and qualifying volume can be eligible for discounts on samples.



Digital Department

Protek Color Lab is offering complete Digital services and solutions to enhance and improve the quality of your work. All products featured are available on-line (ROES) for order submission. The following are examples of services offered:

- Fast and efficient Proofing and selective printing of all Digital files. This includes images from Digital Cameras or other sources.
- **ROES Protek Remote Order Entry System** on-line order submissions.
- **LabPrints** Digital Studio LP™ is a comprehensive suite of marketing, ordering, album design, and presentation tools for professional photographers.
- **Renaissance masterpiece prints** from negatives or digital files.
- Digital Retouching and Manipulations.
- Custom album designs.
- Digital Low Res. scans for the Internet or High Res scans for reproductions.



Proof Output

This service is a complete print out of all Images / files in a CD-ROM, DVD-ROM, ZIP DISC, FLASHCARD or SMARTMEDIA. For the best quality, every image is individually density, color, contrast and saturation corrected, and printed with laser printers on true professional photographic papers.

SIZE	PRICE W/ FULL CORRECTION	PRICE W/ GLOBAL CORRECTION
3 1/2X5 OR 4X5	\$0.35	\$0.20
4X6 OR 5X5	\$0.40	\$0.20
5X7	\$0.60	\$0.40
COLOR CORRECT ONLY (NO PRINTS)	\$0.25 / IMAGE	N/A
CD OUT OF CORRECTED IMAGES (HI-RES)		\$5.00 EACH

- MINIMUM ORDER: \$5.00 PER SIZE.
- NO ADDITIONAL CHARGE FOR BORDERED PRINTS (SLOPPY, KEYLINE, BLACK KEYLINE, Etc.)
- ALL FILES/ IMAGES IN MEDIA MUST BE PRINTED. SELECTIVE PRINTING NOT POSSIBLE SAME SIZE AND QUANTITIES PRINTED FROM ALL IMAGES / FILES. ALL IMAGES ARE PRINTED FULL FRAME BLEED, CENTER CROPPED.
- COLOR SPACE MUST BE SRGB. TIF OR JPEG FORMATS ONLY, FILE NAMES SHOULD BE LESS THAN TWENTY CHARACTERS AND SHOULD CONSIST OF UNDERSCORE AND ALPHANUMERIC CHARACTERS ONLY.
- DELIVERY TIME: 3 WORKING DAYS

Digital selective prints

Selective prints allows you to choose and print only a selection of images from your CD-ROM, DVD-ROM. Each image is color and density corrected. Mixed sizes and quantities can be printed with this service.

SIZE	PRICE
WALLETS (2 MINIMUM)	\$0.50
3 1/2X5	\$1.00
4X6	\$1.00
5X5 / 5X7	\$1.30
8X8 / 8X10	\$2.25
10X10	\$2.85
10X13-15	\$3.50
11X14	\$4.00
16X20	\$14.00
20X24	\$22.00
24X30	\$38.00
30X40	\$49.00

- ALL IMAGES ARE PRINTED ON LUSTER PAPER AS FULL FRAME BLEED UNLESS SPECIFIED.
- FOR ACCURATE MATCHING TO SAMPLE PRINTS PLEASE REFER TO CUSTOM DIGITAL PRINTS.
- NO MINIMUM.
- DELIVERY TIME: 3 WORKING DAYS.

Custom Digital Prints

This service is for the highest quality of digital outputs. Every image file is video analyzed for the best color and density corrections. Then numerous tests are made until the best possible print quality is achieved.

SIZE	PRICE
5X7 or smaller	\$6.00
8X8 / 8X10	\$8.50
10X10	\$10.00
10X13-15	\$12.00
11X14	\$12.00
16X20	\$30.00
20X24	\$40.00
24X30	\$60.00
30X40	\$90.00

- SAMPLE PRINTS SHOULD BE PROVIDED FOR COLOR/DENSITY MATCH.
- FOR METALIC PAPER ADD 50%.
- DELIVERY TIME: 3 WORKING DAYS

Digital Retouching

We have divided our Digital retouching services into three main categories. Each negative is scanned at the highest resolution, retouch work is performed and then prints are produced directly from the digital files. This method eliminates the need for a second generation negative, thus improving the quality and the sharpness of the final print. A CD-ROM of the retouched image or images is also generated with each order in case more prints are desired in the future.

Basic Retouching

- REMOVAL OF LIGHT BLEMISHES, ACNE, SCARS, ETC.
- SOFTENING OF LINES, WRINKLES, BAGS UNDER EYES.
- SOFTENING OF SKIN GLARE.

BASIC RETOUCHING

\$7.50 PER HEAD

Advanced Retouching

- EXTENSIVE REMOVAL OR SOFTENING OF BLEMISHES, BLOTCHY SKIN.
- REMOVAL OF BRACES.
- STRAY HAIR IN BACKGROUND OR IN THE FACIAL AREA
- GLASSES GLARE (EYE SHOULD BE VISIBLE AND NOT LOST IN GLARE)

ADVANCED RETOUCHING

\$15.00 PER HEAD

Digital Manipulation

- CUT AND PASTE
- BACKGROUND CHANGE
- EYES OPENED/ EYES CREATED
- RESTORATION OF OLD OR DAMAGED PHOTOGRAPHS

DIGITAL MANIPULATION

\$75.00 PER HOUR

CD-ROM OF FINAL RETOUCED IMAGE

\$3.00 PER IMAGE

- DELIVERY TIME: 5 WORKING DAYS

Digital Scans

This service is writing of negatives to CD-ROM. Format choices are TIFF and JPEG. All scans from 1MB and up include Low Res thumbnails. One MB and larger files are scanned using Digital Ice Technology which entirely removes all imperfections on film (dust, scratches, finger-prints and etc...). All scans are individually color and density corrected.

FILE SIZE	PRICE PER FRAME (Carded neg.)	PRICE FROM UNCUT ROLLS
1 MB	N/A	\$0.40
5 MB	\$1.00	\$0.45
10 MB	\$1.00	\$0.50
20MB	\$1.00	\$0.60
40MB	\$3.50	\$0.75
60MB	\$5.00	\$1.00
80MB	\$10.00	\$1.50
100MB	\$15.00	\$1.75

- ALL FRAMES WILL BE SCANNED WHEN UNCUT ROLLS ARE SUBMITTED FOR SCANNING

- DELIVERY TIME: CALL

Renaissance Masterpiece Prints

Our Renaissance service will create a Masterpiece from your portrait digital files or negatives. Skilled printing technics will be applied where needed to enhance and improve the quality of the image using the highest caliber of equipment. Expert print retouching and enhancements, with the use of corrective dyes, pencils and airbrush will assure your customers complete satisfaction. All Renaissance Prints are bonded onto real canvas and mounted on masonite, gatorfoam or stretched onto wooden stretcher frame. High gloss lacquer spray is applied to protect and preserve the Masterpiece for many years to come.

PRINT SIZE	PRICE
5X7/8X10	\$130.00
11X14	\$165.00
16X20	\$210.00
20X24	\$275.00
20X30	\$330.00
24X30	\$390.00
30X40	\$495.00
40X50	\$765.00

- ALL RENAISSANCE PRINTS INCLUDE: FACIAL CORRECTIONS AND ENHANCEMENTS, ADDING FACIAL HIGHLIGHTS, SMOOTH SKIN AND BLEMISHES, UNDER EYE BAGS, DEFINING JAW LINES, TRIM FACE, OPEN EYES, SMOOTH LIPS, TRIM NOSE, ENHANCE EYES, ELIMINATE DISTRACTIONS IN BACKGROUND/FOREGROUND, CLOTHING AND ACCESSORIES AND MANY OTHER DETAILS.
- INTENDED FOR ANY PORTRAIT SUBJECT, PHOTOGRAPHED IN STUDIO OR OUTDOORS.
- PRICES INCLUDE NEGATIVE RETOUCHING (WHERE APPLICABLE) OR DIGITAL FILE PREPARATION AND SUPERIOR PRINT RETOUCHING AND ENHANCEMENTS FOR ONE HEAD. FOR EACH ADDITIONAL HEAD ADD 15%.
- PRICES INCLUDE REAL CANVAS OR LINEN BONDING ON YOUR CHOICE OF MASONITE, GATORFOAM OR STRETCHER BARS, FINISHED WITH HIGH GLOSS LACQUER SPRAY.
- FOR ANY SIZE NOT LISTED PLEASE CALL CUSTOMER SERVICE.
- SIGNATURE SERVICE AVAILABLE AT \$15.00 EACH
- DELIVERY TIMES: 14 WORKING DAYS

Juliana

Albums

Print & Bind Leatherette Album Packages

Leatherette Covers with 4x4 Drop Cameo or No Cameo, available in Several Colors. Gallery Box Included.

For additional options and covers see Album Package Upgrades below.

11x14 or 12x12	10 PAGES / 20 SIDES	\$219.00
8X10 OR 10X10	10 PAGES / 20 SIDES	\$175.00
11X14 OR 12X12	15 PAGES / 30 SIDES	\$239.00
8X10 OR 10X10	15 PAGES / 30 SIDES	\$190.00
11X14 OR 12X12	20 PAGES / 40 SIDES	\$290.00
8X10 OR 10X10	20 PAGES / 40 SIDES	\$239.00

Album Package Upgrades

Crystal Covers	Drop Style Add \$50.00	Flush Add \$90.00
Aluminum & Laminated Image Covers	Drop Style Add \$40.00	Flush Add \$100.00
Plexi or Acrylic Cover (11x14, 12x12 and 12x16 only)	Add \$100.00	
Plexi or Acrylic Cover Two sides (11x14, 12x12 and 12x16 only)	Add \$80.00	
Italian Handmade Linea Covers	Add \$120.00	
12x16 Size Upgrade	Add \$90.00	
Custom Cameo (Any Size on Cover: Square only)	Add \$40.00	
Genuine Leather Cover (All Sizes, Call for Color Selection)	Add \$85.00	
Imprinting on Cover	Add \$115.00	

Print & Bind PDQ Album Packages (3 Day Turn around)

Available in Black & Ivory (11x14, 12x12, 10x10), Leatherette Gallery box Included, Imprint Upgrade only

11x14 or 12x12	15pages / 30sides	\$200.00
11x14 or 12x12	20pages / 40sides	\$230.00
10x10	15pages / 30sides	\$170.00
10x10	20pages / 40sides	\$200.00

Print & Bind Parents' Album Packages

Available in Leatherette or coffee table book covers.

Below prices apply when ordered simultaneously with any 11x14, 12x12 or 10x10 album print and bind package.

6x8 parents' album*	15pages / 30sides	\$50.00
6x8 parents' album*	20pages / 40sides	\$60.00
8x8 parents' album*	15pages / 30sides	\$70.00
8x8 parents' album*	20pages / 40sides	\$80.00
Sign Book (8x10 Horizontal Wrap Covers)	Up to 15 pages / 30 Sides	\$90.00

Album design / Graphic design

Protek now offers complete magazine and photojournalistic style album designs. Years of experience in digital imaging and retouching combined with the most up to date imaging resources and equipment allowed us to establish the optimum graphic and album design service at the highest quality possible.

Since Protek is a complete digital imaging lab, we have years of extensive experience in digital retouching and manipulations. Since 1995 we started with Adobe Photoshop 3.0 and the Repli system and since then our designers have advanced dramatically and have formal certifications in Adobe Photoshop, Illustrator and Quark Express. Samples of our work is available for your review.

For top quality control we handle the entire work-flow in house. From scanning to color corrections, album design, post color corrections and printing. Our designers are available for one-to-one consultations and are able to fulfill any specific requests and preferences. Our ability to maintain the entire production in-house enables us to create efficiency and offer the best quality at the most reasonable prices.

ALBUM PAGE DESIGNS	PRICE PER SIDE (DESIGN AND PRINT)	PRICE SECOND SET
10X10, 11X14, 12X12	\$8.75 PER SIDE	\$3.50 PER SIDE
20/40 PAGE ALBUM	\$350.00 (DESIGN AND PRINT UP TO 80 IMAGES)	\$140.00

- PRINTED WITH LASER PRINTERS ON KODAK PROFESSIONAL PHOTOGRAPHIC PAPERS.
- WE SUGGEST THAT ALL DIGITALLY CAPTURED IMAGES BE COLOR CORRECTED BEFORE ALBUM DESIGN AND PRINTING.
- SCANNING AND PRE-COLOR CORRECTIONS ARE NOT INCLUDED IN THE PRICE.
- CUSTOMER SHOULD PROVIDE SEQUENCE OF IMAGES TO BE USED IN THE ALBUM.
- IDEAL RATIO OF NUMBER OF IMAGES ARE 2.5 PER SIDE OR 5 PER PAGE.
- ALL PAGES ARE DESIGNED WITH A 3/4 INCH BACKGROUND MARGIN FOR THE ALBUM BINDERY TRIMMING.
- FIVE CHANGES ARE INCLUDED IN EACH 20/40 ALBUM DESIGN.
- COMPLETED ALBUM LOW RESOLUTION PDF FILES WILL BE E-MAILED TO THE CUSTOMER FOR APPROVAL PRIOR TO PRINTING.
- MINIMUM ORDER: 10 PAGE 20 SIDE.
- ABOVE PRICES DO NOT INCLUDE ALBUM BINDING.
- DELIVERY TIMES: 3-4 WEEKS

Optical/Traditional services

PLEASE FOLLOW THE GUIDELINES AND PROCEDURES SET FORTH BELOW WHEN SUBMITTING YOUR ORDERS.

- Use the same film emulsion throughout your jobs.
- Enter all pertinent information on your order envelope. If there is a discrepancy in quantity or size on a reprint envelope and the glassines or negatives within, only the quantities and sizes marked on glassines or negatives will be followed and the information on the envelope will be entirely ignored.
- **Do not mix film types. Do not mix film sizes. Do not mix film formats.** Each of these require separate order envelopes. If a proofing size is not specified on a process and proof order, the lab will print the smallest available proof size according to format.
- Keep each of your negatives in a separate glassine envelope. When ordering from our Custom Department, write all cropping, dodging and burning instructions on the glassine envelope and include a guide print.
- We reserve the right to return any poor negatives that our technicians feel cannot produce a print of high quality. Please specify **PRINT REGARDLESS**, and we will print all frames regardless of density and color standards.
- For a specific color and/or density preference a sample print should accompany your order and the order should be printed on a Custom Print basis. Color and/or density remakes will not be accepted, unless a sample print was originally submitted with the order.
- Protek Color Lab assumes no responsibility for prints or enlargements submitted for mounting and finishing where the prints were not produced by Protek.
- Once an order has been submitted and entered in production, changes can not be guaranteed even if these changes are called in subsequently.
- To keep our film prices at a discount, all film sales are handled as C.O.D. There will be no open account or terms for film purchases.
- Information and prices for any service you do not see offered in our price list will be furnished upon request.

Limit of Liability (please read carefully)

Submission of any film or print or any other related materials to **Protek Color Lab**, constitutes an agreement by you that if any such materials are lost or damaged by **Protek Color Lab**, subsidiary, or agents, even though due to negligence or other fault, will only entitle you to replacement with a like amount of unexposed film and processing. All prices in this catalogue are subject to change without prior notice.

Film Processing

KODATEL™ COMPUTER controlled and monitored dip and dunk film processing assures highest caliber of C41 process quality and consistency, regardless of film brand and size. Additionally, the entire dip and dunk process is observed with Infrared cameras and monitors to prevent and avoid any damages caused to film due to rack alignments or other breakdowns.

If our technicians detect abnormalities in your film such as: out of focus, intermittent flash problems, camera fogging, etc. during film inspection, the photographer will be notified immediately so that you can correct the problem.

FILM TYPES: KODAK PORTRAIT, FUJIFILM COLOR, AGFACOLOR, ETC.

SIZE	PRICE
35mm 12/24 EXP	\$4.00
35mm 36 EXP	\$5.00
120	\$4.00
220	\$3.00

- DELIVERY TIME: 3 WORKING DAYS

Color Proofing

Each frame of negative film is scanned in high resolution, color and density corrected via a digital video analyzer, and printed using the highest quality Kodak Professional laser printers. Many different choices of borders available for proofing at no additional charge. We also offer spiral binded proof magazines which are 8x10 sheets that hold 12 images with all studio and sequential information. Proofing service is only for uncut roll films processed by **Protek Color Lab**. For cut film, or film processed elsewhere refer to our machine or custom printing services.

NEG SIZE	3 1/2 X 5	4 X 5	4 X 6	5 X 5	5 X 7
35 mm	\$0.55	N/A	\$0.55	\$0.60	\$0.80
120/220	N/A	\$0.55	N/A	\$0.60	\$0.80
PROOF MAGAZINES (12 IMAGES PER SHEET)					
\$2.00 PER SHEET					

Proof Positive

For your convenience, Protek Color Lab includes this valuable service in your proofing order. After receiving your proofs and negatives, you will find that each proof will have your STUDIO NAME w/ copyright symbol, your customer reference, date, the order number, roll number and frame number on the back of each proof and matching negative glassine. This will also apply to all CD-Rom and Magazine sheets ordered in conjunction with paper proofs. This service will greatly save you time in sorting, matching and numbering your negatives and proofs.

Glassine:

Back of prints:

JONES WEDDING, R001, F001

- BLACK & WHITE TONES OR SEPIA TONES AVAILABLE FROM ANY FILM TYPE AT NO ADDITIONAL COST.
- ADDITIONAL SET PROOFING ORDERS, THE SECOND OR MORE SETS WILL BE PRICED AS 25% OFF REGULAR PRICING. NO EDITING ALLOWED, MUST PRINT A MINIMUM OF 1 PRINT PER FRAME.
- SLOPPY BORDERS, KEYLINES, AND OTHER STYLES AVAILABLE FOR ALL SIZES AT NO ADDITIONAL COST.
- THE ABOVE PRICES APPLY TO ALL COLOR AND BLACK & WHITE FILMS.
- DELIVERY TIME: 3 WORKING DAYS (FILM MUST BE IN BY 1:00 P.M. MON-FRI.)

Economy Proofing

Economy Proofing Is an excellent choice for Photographers who prefer to use the 35mm format. We use the all new Fuji Frontier Pro Digital printers. Each frame of film is individually scanned and previewed, Color and density corrections are added and then printed with Laser technology on true professional photographic paper. This technology will automatically enhance many features of the image, such as: Grain compression, edge sharpness and color saturation. Your 35mm images will very much resemble 2 1/4 format results. Studio name , roll numbers and actual film frame numbers are printed on back of each proof.

NEG SIZE	3 1/2X5	4X6	5X7
35mm	\$0.30	\$0.40	\$0.55

- WHITE BORDERS AVAILABLE AT NO ADDITIONAL COST.
- SEPIA OR BLACK AND WHITE TONE PROOFS FROM ANY FILM TYPE AT NO ADDITIONAL COST.
- AVAILABLE FOR 35MM ONLY. FOR 120/220 SIZES PLEASE REFER TO REGULAR PROOFING.
- INDIVIDUALLY CUT NEGATIVES AND GLASSINES(PROOF POSITIVE) IS NOT AVAILABLE WITH THIS SERVICE. FILMS WILL BE DELIVERED UNCUT OR CUT AND SLEEVED IN STRIPS.
- DELIVERY TIME: 2 WORKING DAYS

Digital Proofing

All your negative frames are DIGITALLY color and density corrected, scanned and delivered to you on a CD-ROM, DVD-ROM or ZIP DISC. When ordered in addition to traditional (paper) proofs, all digital images will have corresponding sequence numbers matched to your proof positive prints and negative glassines. It can be used for general preview and uploading on to the Internet.

All images are scanned at 250DPI, on JPEG file format. It is compatible with all PC and MAC computers, and with virtually all imaging software.

DIGITAL PROOFING	\$0.35
WHEN ORDERED IN ADDITION TO PAPER PROOFS	\$0.20

- DELIVERY TIME: 2 WORKING DAYS

Machine Prints

Protek Color Lab offers the best in machine printing. All negatives or transparencies are scanned at highest resolution and digitally video analyzed for the best color and density corrections. Then they are tested and ultimately printed using the industries best digital photographic printers. By using crop cards, the photographer is in complete control of all composition and cropping requirements.

SIZE	PRICE NEGATIVES	PRICE TRANS.
WALLET (2 MINIMUM)	\$0.40	\$0.50
31/2X5	\$0.90	\$1.30
4X5	\$0.90	\$1.30
4X6	\$1.00	\$1.30
5X5	\$1.00	\$1.30
5X7	\$1.25	\$1.50
6X8 (35mm / A CROP ONLY)	\$1.90	\$2.50
8X8	\$1.90	\$2.50
7X10 (35mm / A CROP ONLY)	\$2.00	\$2.75
8x10	\$2.50	\$3.00
10x10	\$2.90	\$4.50
11x14	\$4.90	\$7.50
16x20	\$16.00	\$25.00
20x24	\$26.00	\$35.00
24x30	\$39.00	\$50.00
30x40	\$65.00	\$90.00

- **AVAILABLE CROPS. A, B, B-SQ, C, C-SQ, D, D-SQ, E, E-SQ, F, G.**
- IT IS RECOMMENDED THAT THE STUDIO CARD ALL NEGATIVES SUBMITTED FOR MACHINE PRINTING. NON CARDED NEGATIVES WILL BE CARDED BY THE LAB AT FULL FRAME AND WILL BE CHARGED AT **25¢** PER NEGATIVE. ANY CROPPING REMAKES WILL NOT BE ACCEPTED IF THE NEGATIVES WERE CARDED BY PROTEK. WE WILL BE HAPPY TO PROVIDE YOU WITH ALL SIZES OF CROP CARDS AT YOUR REQUEST. PLEASE BE ADVISED THAT INCORRECTLY OR REVERSE CARDED NEGATIVES WILL BE PRINTED AS-IS. DUE TO OUR HIGH VOLUME OF CARDED MACHINE PRINT ORDERS, WE WILL NOT BE ABLE TO INSPECT EVERY CARDED NEGATIVE FOR PROPER CARDING.
- BURNING AND DODGING IS NOT POSSIBLE.
- TRANSPARANCIES SHOULD BE: 1) MOUNTED 35mm SLIDES. 2) UNMOUNTED 120/220 TRANSPARANCIES.
- PRINTED ON **KODAK PROFESSIONAL PAPER**, SURFACE (E) LUSTER.
- NORMAL SPOTTING IS INCLUDED. EXCESSIVE SPOTTING DUE TO DUSTY OR SOILED NEGATIVES IS NOT INCLUDED.
- DELIVERY TIME: 7 WORKING DAYS

Full Size Cut-outs

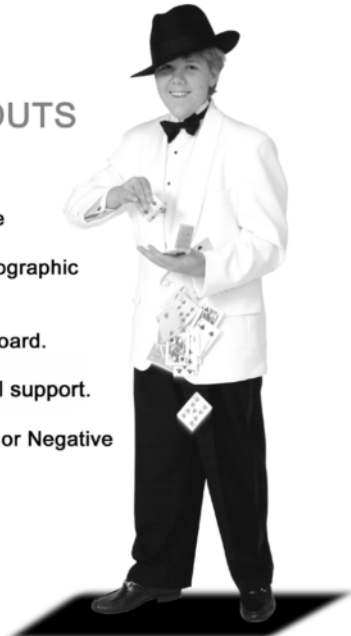
Full size cut outs are a perfect addition to any event, specially Barmitzvahs, Batmitzvahs or Christenings.

Image by: Gary West Productions Inc.

FULL SIZE CUT-OUTS

- Any Length up to 48" wide
- Laser output on true photographic paper.
- Mounted on 1/2 " Gator Board.
- Complete with back easel support.
- Available from any media or Negative
- Only \$295.00

Protek Color Lab
Professional Imaging
www.protekcolorlab.com

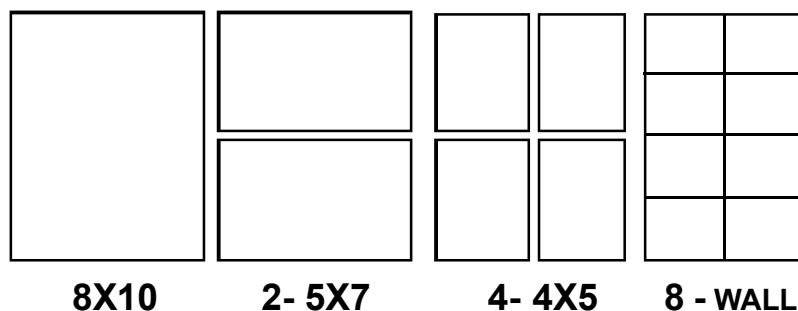


- DELIVERY TIME: 7-10 WORKING DAYS

Package Prints / Portrait Packages

These print packages are designed for the school, senior and portrait photographer. Package prints are available from Digital files or Negatives. All images are video analyzed for optimum color and density corrections.

8X10 PACKAGE UNIT



8X10 PACKAGE UNIT	\$1.60
--------------------------	---------------

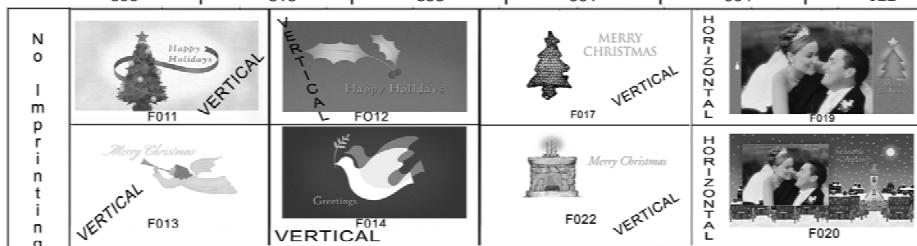
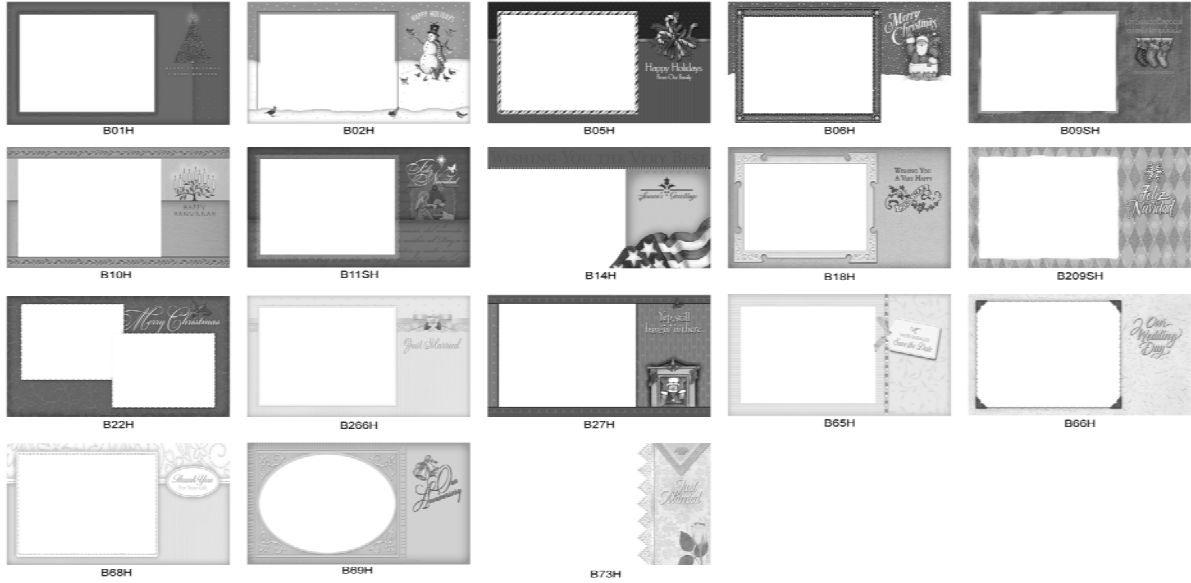
Package Combinations

These are predefined packages designed with many different print configurations and quantities.

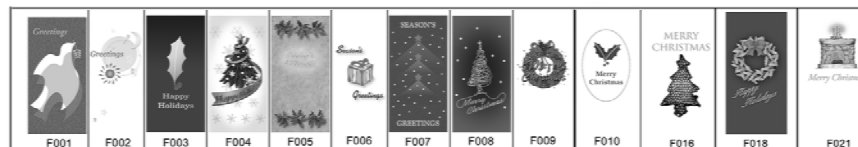
P #	DESCRIPTION	P #	DESCRIPTION	P #	DESCRIPTION
1	1-8X10, 4-4X5,8-W	10	1-5X7, 2-4X5	19	1- 8X10
2	1-8X10, 2-5X7, 8-W	11	1-5X7, 4- 4X5	20	2-8X10
3	1-8X10, 1-5X7, 2-4X5, 8-W	12	1-5X7, 4- W	21	3- 8X10
4	1-8X10, 2-5X7, 2-4X5, 4-W	13	1-5X7, 8-W	22	1-5X7
5	2-8X10, 4-5X7, 4-4X5, 8-W	14	2-5X7, 4-4X5, 8-W	23	2-5X7
6	1-8X10, 4-5X7	15	2-5X7, 4-W	24	2-4X5
7	2-8X10, 2-5X7	16	2-5X7, 4-4X5	25	4-4X5
8	1-8X10, 2-4X5, 4-W	17	2-4X5, 4-W	26	4-W
9	1-8X10, 1-5X7, 4-W	18	2-4X5, 8-W	27	8-W

- MINIMUM ORDER OF 20 IMAGES/NEGATIVES, 2 UNITS PER IMAGE/NEGATIVE.
- MUST BE SAME EMULSION FILM, PHOTOGRAPHED ON SAME BACKGROUND WITH SAME LIGHTING ARRANGEMENTS AND EXPOSURE.
- DELIVERY: 10 WORKING DAYS

Greeting Cards



The designs below are available in Horizontal format only.



Greeting Card Prices	
1-25 Cards	\$0.75 each
26-50 Cards	\$0.72 each
51-100 Cards	\$0.70 each
101+ Cards	\$0.68 each
Imprinting/Neg	\$15.00 each
Digital files set up	\$10.00/image

Finishing & Mounting

We offer WARP RESIST double weight (4X) boards for dry mounting. For canvas bonding, the print is stripped from its resin backing and embedded onto canvas using a high pressure heated mounting press. Thereafter mounted onto masonite for rigidity and durability, or they are mounted on stretcher bars for the authentic look of a masterpiece painting.

SIZE	DRYMOUNT 4X	FOAMCORE	CANVAS BOND ON MASONITE	GATOR / EXHIBIT MOUNT	HAND BRUSH TEXTURE	RetroArt Canvas	TEXTURE	SPRAY
5X7	\$1.80	\$1.95	\$25.00	\$14.00	\$9.50	N/A	\$0.60	\$1.50
8X10	\$2.00	\$2.25	\$35.00	\$20.00	\$10.50	\$59.00	\$0.80	\$2.50
11X14	\$3.50	\$3.25	\$49.00	\$29.00	\$12.00	\$99.00	\$2.50	\$3.50
16X20	\$6.00	\$5.50	\$59.00	\$39.00	\$15.00	\$139.00	\$6.00	\$6.00
20X24	\$10.00	\$9.50	\$69.00	\$49.00	\$17.50	\$139.00	\$8.00	\$8.00
20X30	\$14.00	\$12.00	\$79.00	\$59.00	\$26.00	\$179.00	\$10.00	\$10.00
24X30	\$18.00	\$15.00	\$89.00	\$59.00	\$31.50	\$189.00	\$15.00	\$15.00
30X40	\$25.00	\$22.00	\$99.00	\$69.00	\$51.00	\$229.00*	N/A	\$20.00

* RetroArt Canvas maximum Size 28x40

- CANVAS BOND ON STRETCHER BARS ADD \$10.00 TO MASONITE PRICES.
- TEXTURE PATTERNS AVAILABLE: (CANVAS, PEBBLE, LINEN)
- SPRAYS AVAILABLE: (GLOSS, LUSTRE, MATTE)
- DELIVERY TIME: 2-4 WORKING DAYS

